

(3) $\frac{15}{24} = \frac{5}{8} = .625 = 62.5\%$

P774-775 11.7
201 HW
Key

(4) $\frac{3}{24} = \frac{1}{8} = .0125 = 12.5\%$

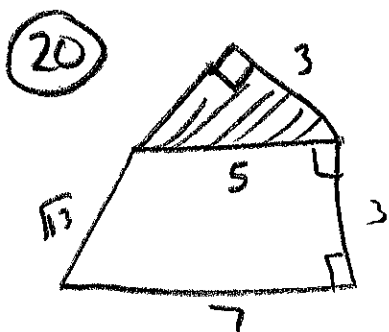
(8)
$$\frac{4\pi - (2\sqrt{2})^2}{4\pi}$$

(.36)

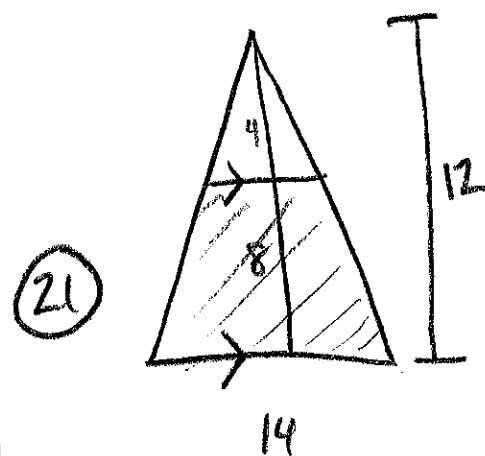
(9)
$$\frac{\frac{1}{2} 7 \cdot 6}{\frac{1}{2} 14 \cdot 12} = \frac{1}{4} = .25$$

(10)
$$\frac{14.5 - 40}{\frac{1}{2} 5(8+20)} = \frac{30}{70} = \frac{3}{7} = .43$$

(11)
$$\frac{70 - \left(\frac{1}{2} \pi 25 + 2 \cdot 10 \right)}{70} = .15$$
 ← missing



$$\frac{\frac{1}{2} 3 \cdot 4}{\frac{1}{2} 3 \cdot 4 + \frac{1}{2} 3(5+7)} = \frac{6}{6+18} = .25$$



Similar Δ s
S.F. $\frac{\text{unshaded } \Delta}{\text{full } \Delta} = \frac{4}{12} = \frac{1}{3}$

Ratio of area $\frac{1}{9}$

Ratio of Area of shaded to whole is $\frac{8}{9}$

(.89)